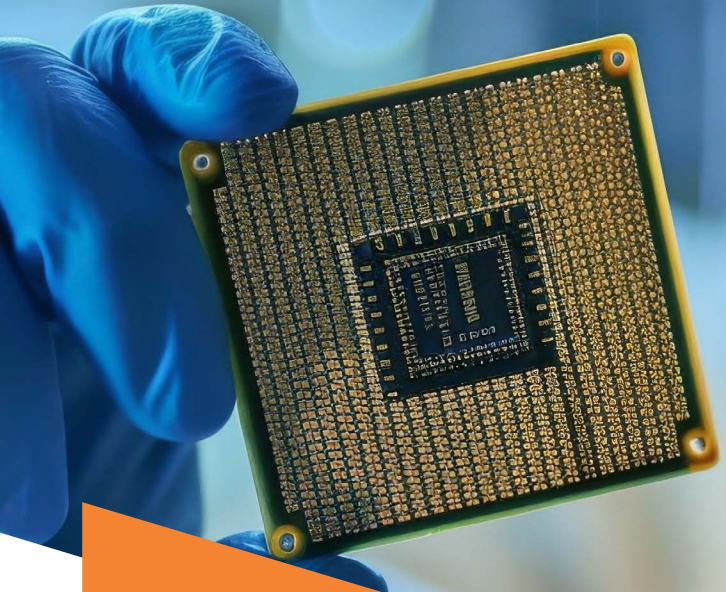


TESSOLVE

A HERO ELECTRONIX VENTURE



Enabling the Future of **Semiconductors & Systems**

Transforming possibilities into
next-gen products



Who We Are

Tessolve

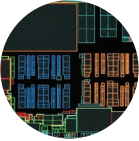
is a leading provider of end-to-end engineering services across the semiconductor value chain, covering chip architecture, design, test development, and embedded systems.

3500+
experts

90%
technical
staff

20+
years of
experience

End-to-End Capabilities



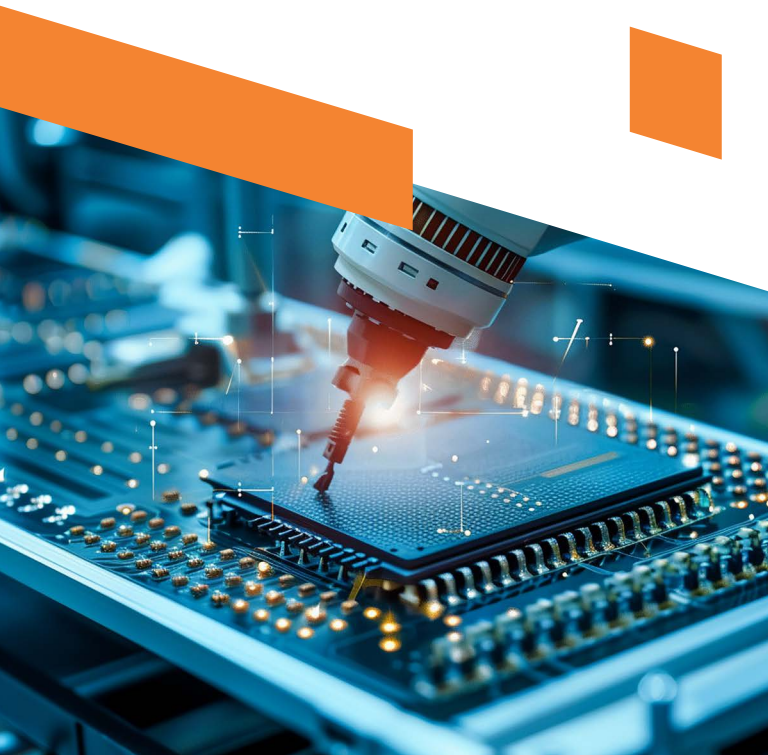
VLSI Design



Post Silicon



Embedded





Industries We Serve



Semiconductor



Automotive



Data Center & Enterprise



Artificial Intelligence



Industrial / IoT



Avionics

VLSI Design



Specs-to-GDSII solutions for Analog, Digital & Mixed-Signal designs



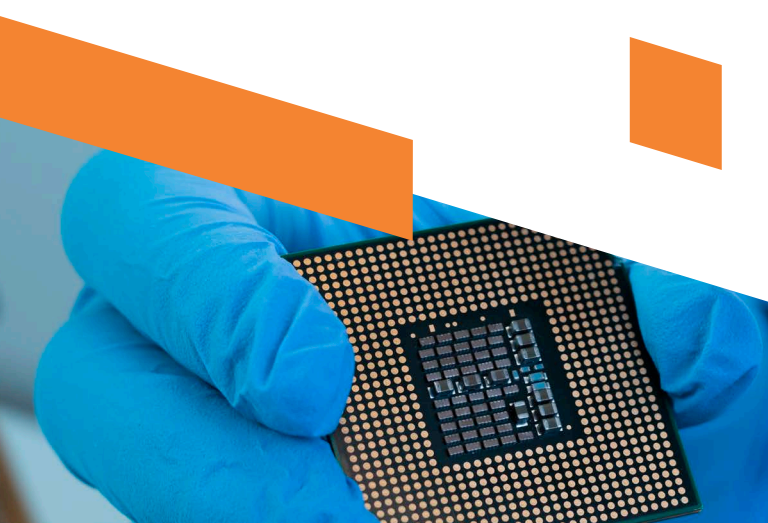
Digital turnkey capabilities including architecture, RTL, verification, DFT, synthesis & STA



Advanced process nodes from 3nm to 180nm



Verification IP (VIP) solutions across multiple protocols



Post Silicon



Test strategy, development & characterization
(ATE and bench)



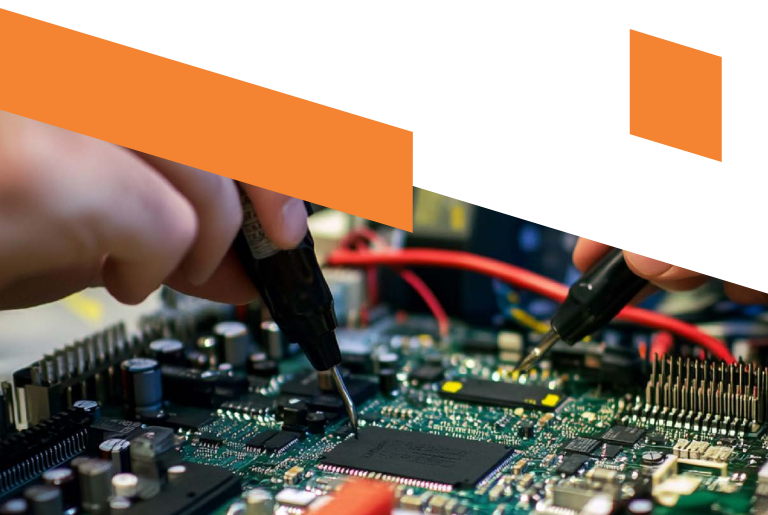
Seamless transition from development to production



PCB design from schematic to manufacturing



Reliability services including HTOL, ESD, latch-up, burn-in & failure analysis



Embedded



Embedded product design
for Hi-tech, Mobility & Industrial
sectors



Linux, Android, firmware,
middleware & driver
development



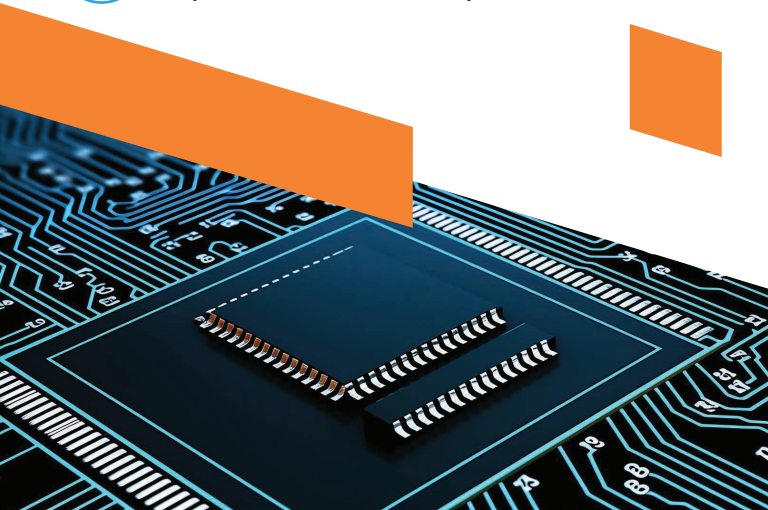
AUTOSAR & ISO 26262 compliant
development



Functional safety &
cybersecurity



Reference platforms: TERA
(Edge AI), Rutomatrix
(Remote Automation)



Our Partners



Global Presence

India | USA | UK | Germany | Singapore | Japan |
Taiwan | Malaysia | Thailand | Canada | Netherlands
| Philippines